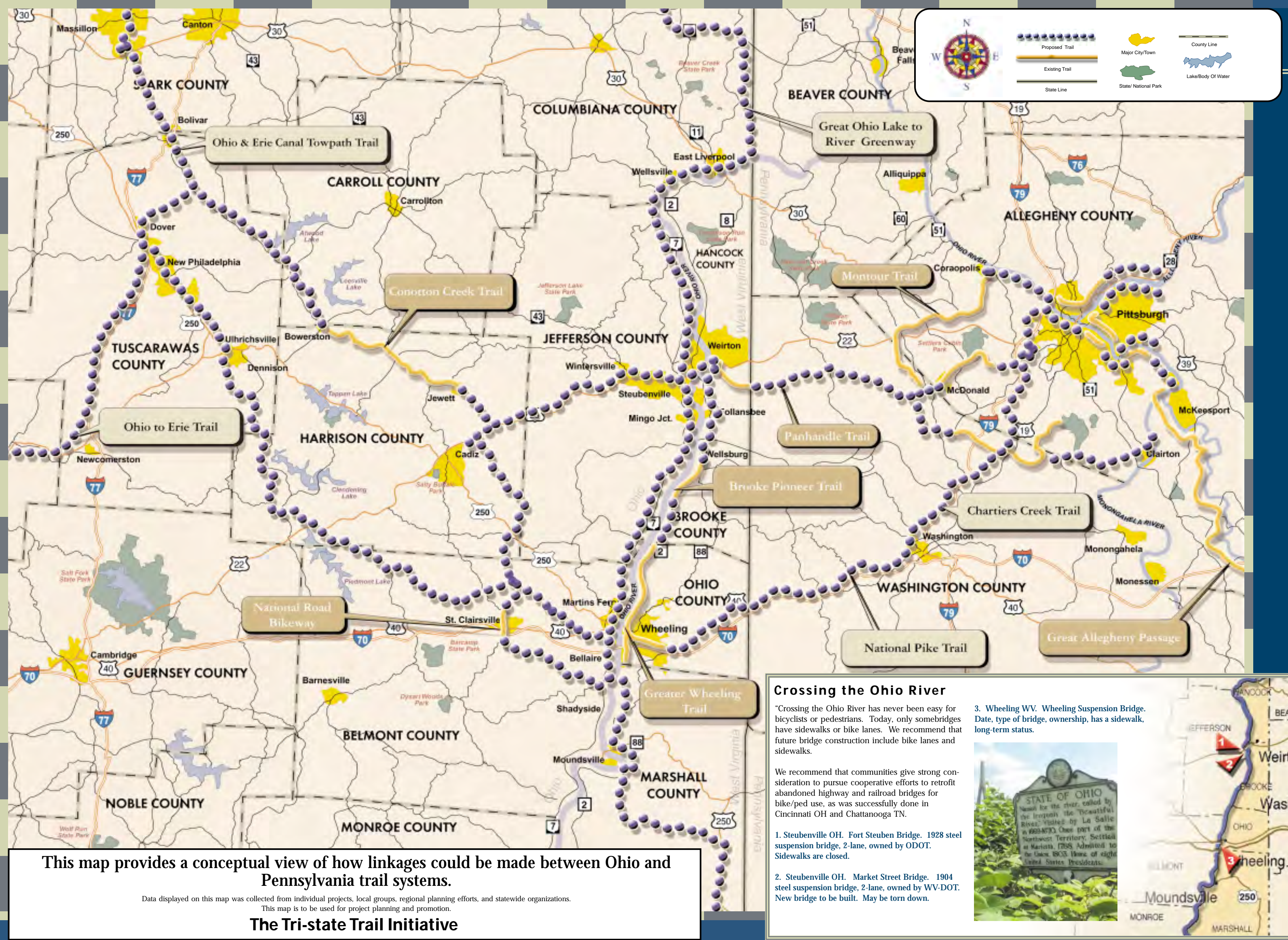


The Tri-State Trail Initiative: A Vision for Connecting Ohio, West Virginia, and Pennsylvania



Legend

- Proposed Trail (Dotted purple line)
- Existing Trail (Solid yellow line)
- State Line (Dashed black line)
- Major City/Town (Yellow shaded area)
- State/ National Park (Green shaded area)
- County Line (Thin black line)
- Lake/Body Of Water (Blue shaded area)

This map provides a conceptual view of how linkages could be made between Ohio and Pennsylvania trail systems.

Data displayed on this map was collected from individual projects, local groups, regional planning efforts, and statewide organizations. This map is to be used for project planning and promotion.

The Tri-state Trail Initiative

Crossing the Ohio River

"Crossing the Ohio River has never been easy for bicyclists or pedestrians. Today, only some bridges have sidewalks or bike lanes. We recommend that future bridge construction include bike lanes and sidewalks."

We recommend that communities give strong consideration to pursue cooperative efforts to retrofit abandoned highway and railroad bridges for bike/ped use, as was successfully done in Cincinnati OH and Chattanooga TN.

1. Steubenville OH. Fort Steuben Bridge. 1928 steel suspension bridge, 2-lane, owned by ODOT. Sidewalks are closed.
2. Steubenville OH. Market Street Bridge. 1904 steel suspension bridge, 2-lane, owned by WV-DOT. New bridge to be built. May be torn down.
3. Wheeling WV. Wheeling Suspension Bridge. Date, type of bridge, ownership, has a sidewalk, long-term status.

